





**** PART CONVERTED GARAGE

**** QUIET VILLAGE LOCATION

**** Beautifully presented detached family home offering a hall, lounge and dining room, fitted kitchen, three bedrooms and a family bathroom.

Enclosed rear garden, drive and a single garage with storage to the front and converted to the rear, currently used as a home gym. The current owners have plans and planning permission for a 2 storey extension.

INTERNAL VIEWING HIGHLY RECOMMENDED.



HALL

Side entrance door into the hall with upvc double glazed window, radiator and stairs to the first floor.

LOUNGE

Upvc double glazed window to the front, radiator and arch to -

DINING ROOM

Upvc double glazed double doors onto the garden, radiator and door to the kitchen.

KITCHEN

Fitted wall mounted, base and drawer units with work surfaces and a sink and drainer unit. Fitted oven and hob, integrated fridge freezer and dishwasher, plumbing and space for a washing machine. Under stairs storage cupboard, Upvc double glazed windows and a door to the garden.

FIRST FLOOR LANDING

Doors to -

BEDROOM 1

Fitted wardrobes and cupboards, upvc double glazed window and radiator.

BEDROOM 2

Upvc double glazed window and radiator.



BEDROOM 3

Upvc double glazed window and radiator.







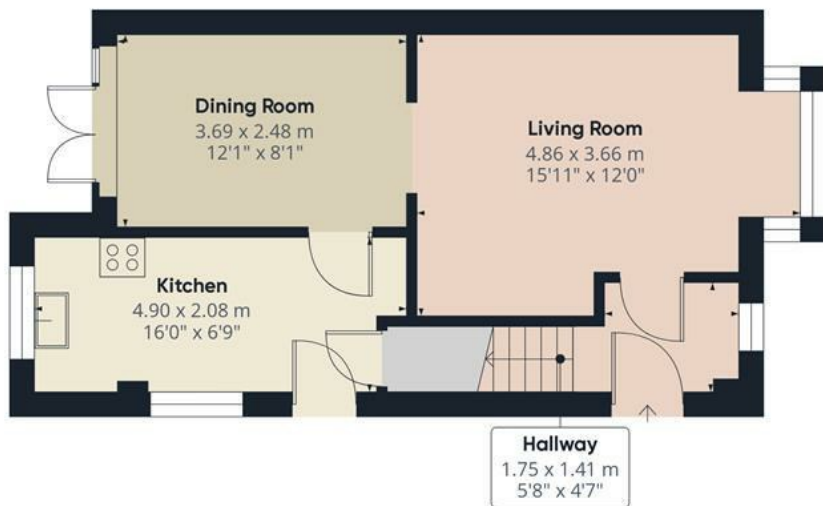
BATHROOM

Panel enclosed bath with a shower and shower screen, vanity sink unit with wash hand basin and storage under and matching cupboards above, low flush wc, upvc double glazed window and radiator.

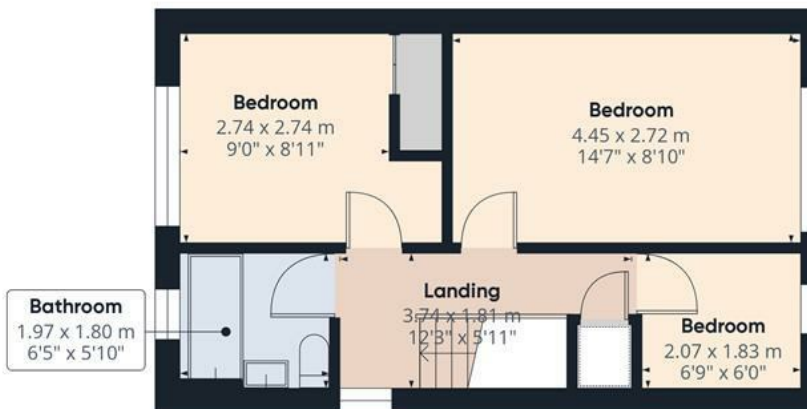
OUTSIDE

Front lawn, side drive to the garage with up and over door to the front storage area. Gated access to the enclosed rear garden with a paved patio areas, lawn and a personal door into the rear converted part of the garage which is currently used as a home gym, would also be an office, playroom or bar.





Floor 0 Building 1



Floor 1 Building 1



Floor 0 Building 2



Approximate total area⁽¹⁾

80.33 m²

864.67 ft²

(1) Excluding balconies and terraces.

While every attempt has been made to ensure accuracy, all measurements are approximate, not to scale. This floor plan is for illustrative purposes only.

Calculations were based on RICS IPMS 3C standard. Please note that calculations were adjusted by a third party and therefore may not comply with RICS IPMS 3C.

GIRAFFE360

